

easydental[®]
2009

installation guide



727 E. Utah Valley Drive, American Fork, Utah 84003

(800) 824-6375

www.easydental.com

fourth edition

March 2009

copyright

© 1987 – 2009 Henry Schein, Inc. All rights reserved. No part of this publication may be reproduced, transmitted, transcribed, stored in a retrievable system, or translated into any language in any form by any means without the written permission of Henry Schein, Inc.

Curriculum subject to change without notice. Not responsible for typographical errors.

licenses and trademarks

© 1987 – 2009 Henry Schein, Inc. Easy Dental, Henry Schein, and the 'S' logo are registered trademarks of Henry Schein, Inc.

Easy Image is a registered trademark, and exclusively developed by Dexis, LLC. Microsoft is a registered trademark and Excel, Windows, and Word are registered trademarks of Microsoft Corporation; HP-Laserjet is a trademark and HP-Deskjet is a registered trademark of Hewlett-Packard Company.

easy dental and microsoft windows

Easy Dental operates in a graphic environment called Microsoft Windows, created by Microsoft Corporation. Microsoft Windows gives a standard look and feel to Easy Dental and all other Windows applications. To run Easy Dental and Microsoft Windows, you need to license and install Microsoft Windows

easy dental and microsoft word for windows

Easy Dental can share its database with Word for Windows, a word processing product created by Microsoft Corporation. To use Easy Dental with Word for Windows, you need to license and install Microsoft Word for Windows.

table of contents

introduction.....	4
easy dental organization.....	4
easy dental 2009 new features list	6
what you should know first	7
how to get help	7
easy dental user's guide	8
installation	9
system requirements.....	9
before installing.....	9
tips for a successful installation.....	9
installing easy dental 2009	12
server install	12
workstation install.....	20
starting easy dental.....	21
registering/activating easy dental 2009	21
register now	22
registering online	24
manually entering registration code.....	25
register later.....	25
using smart upgrades	26

introduction

Easy Dental is designed as a user-friendly software product that caters to every dentist and dental staff member. Every task completed with Easy Dental is simple and straight-forward. From scheduling appointments, to billing, to management reports, Easy Dental is a user-friendly tool that helps successfully manage a practice.

To make operations simple, Easy Dental has taken the unique step of assigning all tasks to graphical toolbars instead of complicated menus. Each primary task has its own set of features that are accessed from the toolbar. This streamlined structure allows the user to locate and use each feature quickly and efficiently.

Easy Dental provides a technical support team to answer questions and solve concerns. Our support technicians undergo extensive weekly training to keep abreast of the latest technical information.

Thousands of dental practices worldwide have proven the Easy Dental software to be capable of turning a practice into a viable and profitable business.

Easy Dental boosts staff productivity, enhances professionalism, increases collections, helps keep chairs full, and improves the bottom line. From front desk to operator, to x-ray, Easy Dental provides profitable integration solutions.

easy dental organization

Easy Dental is organized into ten different windows of information, or modules: Patients, Accounts, Treatment Plans, Chart, Rx Writer, Contacts, Schedule, Recall, Documents, and Reports.



Patients

The Patients module manages patients' demographic and insurance information. Patient information, such as patient's name, address, employer, insurance information, notes, and recall, are entered in this module. Patients are organized by family, and a patient's position within a family can be viewed in this module.

**Accounts**

The Accounts module is used to manage patients' accounts. The Accounts module accurately details completed procedure costs, insurance claims, guarantor and insurance payments, and a running balance.

**Treatment Plans**

The Treatment Plans module is used to enter and track recommended procedures. This module features the Estimator, a unique case presentation program that displays the treatment plan costs in terms of primary and secondary insurance portions and estimated patient's portion.

**Chart**

The Chart's complete chair-side integration makes it the perfect tool to simplify record-keeping. In the Chart, entering and documenting existing, recommended, and completed treatment is as simple as clicking a mouse. The Chart uses standard textbook charting symbols that are familiar and easy to use.

**Rx Writer**

The Rx Writer module is used to quickly create prescriptions and accurately track medicines prescribed to patients.

**Contacts**

The Contacts module acts as a contact manager for the office. All correspondence and contacts made with a patient can be recorded in this module.

**Schedule**

The Schedule module looks exactly like a paper schedule with the appointments blocked out in various colors, signifying different providers. With this module, appointments (including unscheduled appointments, recall appointments, and ASAP appointments) can be scheduled and tracked, significantly increasing production.

**Recall**

The Recall module allows you to effectively track and manage the recall system in your office. Recall will help you to stay on top of your patient retention with a series of lists and the ability to customize patient settings.

**Documents**

The Documents module allows you to attach electronic documents and images to patients, insurance carriers, providers, referrals, and employers.

**Reports**

The Reports module generates informative reports, performs practice analysis functions, and controls most printing processes. Easy Dental can be configured to your practice's unique needs in the Reports module.

[easy dental 2009 new features list](#)

The following features and enhancements are new to the Easy Dental 2009 release. This is not a comprehensive list, but the main features and enhancements are mentioned here.

Perio Chart

With the new Perio Chart, managing perio exams in Easy Dental 2009 is simple. You can create new exams, enter perio clinical notes, compare two exams, and print perio charts and letters. The Perio Chart has six pre-defined navigation scripts so you can select the one that best fits your measurement style.

Registration

Registration/activation is required with Easy Dental 2009. Registering/activating your software allows the Check for Updates feature to know which version of the software you are using to provide you with key software updates. Registration/activation also allows Easy Dental Customer Support Representatives to know which version of Easy Dental you are using in order to provide better service when answering your questions.

Updates

Easy Dental 2009 makes it easy to install updates on all the computers in your office. You can use the Updates feature to check for updates online and

automatically install them on any computer in your office. Then, the Smart Upgrades feature will send a notification message to every other computer on the network, requiring them to install the update, so all your computers are running the most current version of Easy Dental with very little effort.

Miscellaneous Features within Easy Dental

In the Schedule module, you can now purge appointments on the Unscheduled List based on a cut-off date, saving you time from having to delete the appointments one at a time.

In the Accounts module, you can now search for payments by check number, amount, date, payment type, account, insurance carrier, and other criteria.

All references to "Pager" have been changed to "Mobile."

Add-on Product Enhancements

You can now send insurance claims and billing statements electronically in "real-time" as you create them, using integrated features of eClaims and QuickBill.

what you should know first

Before installing Easy Dental 2009, become familiar with basic computer usage, including how to turn the computer on, how to access and designate disk drives, and how to reset or reboot the computer.

Microsoft Windows XP Professional or higher must be installed before Easy Dental 2009 can be installed. For information on installing Windows, consult your Microsoft Windows package.

It is essential to understand the fundamentals of using Windows in order to use the Easy Dental software. This documentation is written with the assumption that users know how to use a mouse, and how to open a Windows menu and select options. Consult the Microsoft Windows documentation to learn more about these actions.

how to get help

Most questions regarding Easy Dental 2009 can be answered by referring to the User's Guide or by using the context-sensitive help available in the Easy Dental software by clicking the Help button found in the toolbar or by pressing Alt + H.

If these methods do not provide an answer, contact Easy Dental Customer Support at **(800) 824-6375**.

Toll-free telephone support is available only to registered users on a current maintenance contract. Registered Easy Dental users not on a current support contract will be billed for telephone support at the current support rate. Support is limited to the current version of the software and one prior release. When calling Support, be near the computer with the problem, and be prepared to give the following information:

- The Easy Dental customer number assigned to the practice
- Your name and the name of the practice
- The Easy Dental version number (found in the Help drop-down under About Schedule in the Schedule module)
- The type of network being used, if any
- The version of Windows installed on the computer and on the server
- The exact wording of any messages that have appeared on the screen
- The circumstances surrounding the question or problem
- Steps that have been taken in an effort to reach a solution

Note: The Easy Dental Support staff has extensive experience in supporting the Easy Dental 2009 software and, as software support, they are not authorized to answer questions or solve problems relating to hardware, network, operating system, or computer configurations. Hardware, network, and operating environments vary from office to office; therefore, questions regarding these topics should be addressed by a hardware and/or operating system support representative from the appropriate vendor or a CIE. Operating system questions can generally be answered by reading the Windows documentation or consulting www.microsoft.com.

[easy dental user's guide](#)

The Easy Dental User's Guide is available in PDF format. The User's Guide is installed with the Easy Dental software and can be accessed by clicking the Desktop icon or by clicking Easy Dental User's Guide in the Easy Dental folder of the Start menu. The User's Guide is also available online at www.easydental.com.

installation

Use this installation guide to install Easy Dental. Follow each step of the installation carefully so as to ensure a successful installation. Read the System

Requirements, Before Installing, and the Tips for a Successful Installation sections before you begin your installation.

system requirements

Due to the new features and technology included in Easy Dental 2009, it is very important to ensure that your system meets the latest system requirements.

System requirements are subject to change according to current computer industry standards. For the latest system requirements, visit

www.easydental.com or call **1-800-824-6375**. Review the system requirements before installing Easy Dental 2009 to ensure a successful installation or upgrade of the software.

before installing

The information contained in the following sections is vital to a smooth installation of Easy Dental 2009. Read this section carefully before beginning the installation. If Easy Dental 2009 is being installed on a network, the installation process must be completed on each workstation. Install Easy Dental 2009 on the file server (the system where the data files will be stored) first.

Note: If your network has a dedicated file server (a system with a Windows operating system installed), you should not install Easy Dental on it. Instead, install Easy Dental on the first workstation as if it is the file server. Be sure to direct paths for the Data Files and Letter Templates to the dedicated server's hard drive. For help setting up a dedicated server network, please contact a qualified network technician.

tips for a successful installation

The following installation tips have been prepared to help minimize or eliminate any issues when installing Easy Dental 2009. For a successful installation, follow the steps below exactly. Please read through all the steps before attempting to install Easy Dental 2009.

Note: Easy Image 4.0 is not compatible with Easy Dental 2009. Easy Image 4.5 must be installed before installing Easy Dental 2009. Call 1-800-824-6375 with questions about Easy Image 4.5 compatibility or for any other questions about these installation tips.

1. Ensure Your System Meets the Overall System Requirements

Ensure the system meets the overall system requirements for Easy Dental 2009 before installing or upgrading. It is very important to review the system requirements for Easy Dental 2009 and verify that each computer meets all of the requirements prior to installing or upgrading the Easy Dental software. Some versions of the

Microsoft Windows operating system are no longer supported with Easy Dental 2009.

- Easy Dental 2009 requires more RAM (memory) than previous releases and may require an upgrade of the memory in the computer. Adequate processor speed and network configuration is important to help reduce or eliminate any latency/performance issues as they relate to Easy Dental 2009. The amount of free memory on any computer can greatly impact the performance of the computer and also the performance of the overall Easy Dental software. Reducing or eliminating the number of unnecessary processes on a computer can significantly improve a computer's performance.

When the system requirements are closely scrutinized and adhered to, the potential for a successful installation/upgrade experience increases dramatically. Easy Dental highly recommends the use of a Certified Integration Engineer (CIE) when installing or upgrading Easy Dental or for verifying system requirements on your computers prior to installing Easy Dental 2009.

2. Back Up, Back Up, Back Up

If possible, a backup should be created of the entire server hard drive. For an upgrade, at a minimum, back up the server's Ezdental directory and all sub-directories. If any Easy Dental data is stored elsewhere on the system, back up that directory as well. Verify the integrity of all backups. Consult an Easy Dental CIE or contact the support organization for your backup software before upgrading to Easy Dental 2009. It is very important to have a valid, verified backup when you are upgrading from a previous version of Easy Dental.

For worry-free data security, try eBackUp for Easy Dental. Call **1-800-824-6375** for details.

3. Check Available Disk Space

From the Start menu, click My Computer, select the C:\ drive icon and select View, then Details from the toolbar. You may also right-click the C:\ drive icon and select Properties. Click the General tab to display the used and free space on the computer. For a workstation install, the free space on disk should be over 2 GB. For a server install, the free space available on disk should be over 10 GB. Although the actual Easy Dental 2009 program requires approximately 1 GB of free hard disk space, it is recommended that at least 2 GB be free at all times for the Windows operating system.

Note: Using Easy Image and/or using the Documents module requires dedicating additional hard drive space (30 – 40 GB more than the 10 GB of free space needed for the Easy Dental 2009 Server installation) to adequately provide storage for current and future patient images and documents. Evaluate the computer's available disk space and plan appropriately.

4. Prepare for Server and Workstation Install

Follow these four steps to prepare for the installation:

- Find the serial number. This number may be needed during the install.
- If you are upgrading Easy Dental, check the Batch Processor for reports. Print the reports and send all unsent eClaims. Then, clear the Batch Processor.
- If you are upgrading Easy Dental, close Easy Dental on each workstation before starting the server install. It is best to shut down each workstation.
- The server installation must be completed before the workstations can be installed.

5. For Upgrades, Verify the Correct Version is Currently Installed

Easy Dental 2007 or 2008 must be installed before the program can be upgraded to Easy Dental 2009. To determine which version of Easy Dental is installed, open Reports, then click Help and About Reports. If the version is older than Easy Dental 2007, all product upgrades must be installed to bring the version to Easy Dental 2007. For example, if Easy Dental 2005 is currently installed, upgrade to Easy Dental 2007 before installing Easy Dental 2009.

6. For Upgrades, Verify the File Locations

If you are upgrading Easy Dental, locate the Easy Dental program, database, and template files. The locations of these files must be confirmed during the installation process. To view the file locations, open Reports, then click Maintenance, and Preferences.

7. Important! Close All Applications that are Running

Look at the Windows System Tray (normally in the bottom, right corner of the screen) and close any unnecessary programs that appear there, including the Easy Dental Time Clock. After the applications have been closed, disable the Windows screen saver. To disable the Windows screen saver, click Start, then select Control Panel, and Display. Click the Screen Saver tab, expand the Screen Saver drop-down, and select [None].

Note: After Easy Dental 2009 has been installed, enable the screen saver by following the same steps, but select a screen saver instead of selecting [None].

8. Verify the Easy Dental 2009 CD Configuration

Verify that the Easy Dental 2009 Installation CD is the right CD for the office configuration (single user, multi-user, or office multi-user).

9. Begin the Installation

Begin the installation by following the step-by-step instructions in this document.

Note: If Easy Dental 2009 is being installed over a network, refer to the Installation Guide for instructions on installing on the workstation from the server.

10. Finish the Installation Completely

Do not interrupt the installation process, even if it looks as though nothing is happening. The installer will open a prompt when the installation is ready to continue. Terminating an installation prior to completion could affect the integrity of the database. Terminate the installation process only if you are directed to do so by Easy Dental Customer Support.

Need help? Involve an Easy Dental CIE or contact Easy Dental Customer Support by sending an email to support@easydental.com or by calling (800) 824-6375.

installing easy dental 2009

Please read the Tips for a Successful Installation before beginning the installation. If the program will be installed on a networked system, the following steps should be completed on the file server first.

server install

1. Insert CD-ROM

Insert the Easy Dental 2009 CD-ROM into your CD-ROM drive. If your computer is equipped with AutoStart technology, the install startup screen appears within a few seconds. If the installation does not begin, complete steps 2 and 3. Otherwise, proceed to step 4.

2. Click Start | Run

Click the Start button and select Run. The Run dialog box appears.

3. Type D:\Launch.exe in the Command Line

Type D:\Launch.exe in the command line (where D: is the drive letter for the CD-ROM drive). Click the OK button to begin the installation. The Easy Dental 2009 splash screen appears.



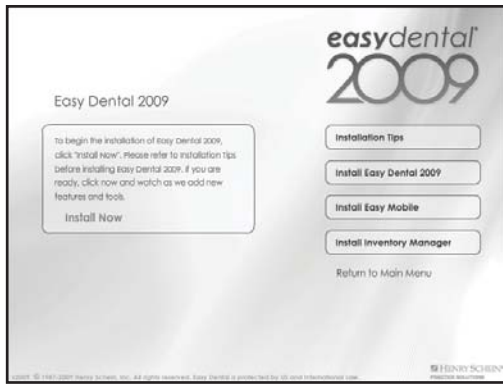
4. Click Install

Click the Install Software button. The Easy Dental 2009 installation screen appears.



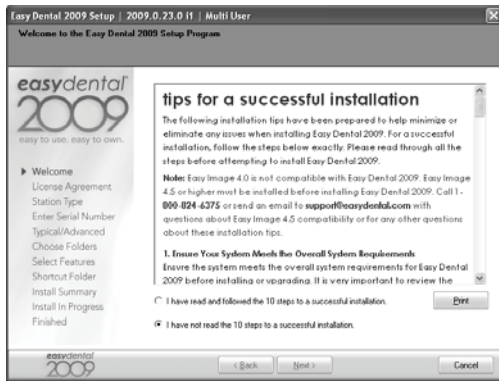
5. Click Install Easy Dental 2009

Click the Install Easy Dental 2009 button. A description of the Easy Dental 2009 installation appears.



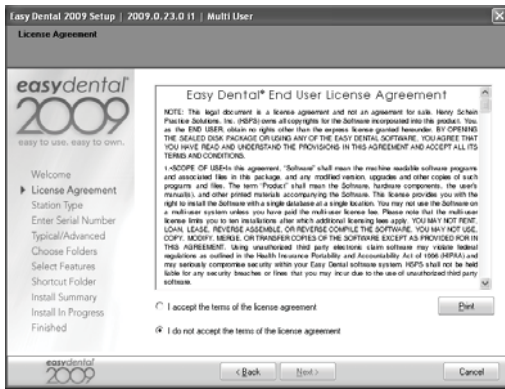
6. Click Install Now

Click the Install Now button. The Installation Setup screen appears for a few moments, followed by the Welcome screen.



7. Mark "I have read and followed the 10 steps to a successful installation"

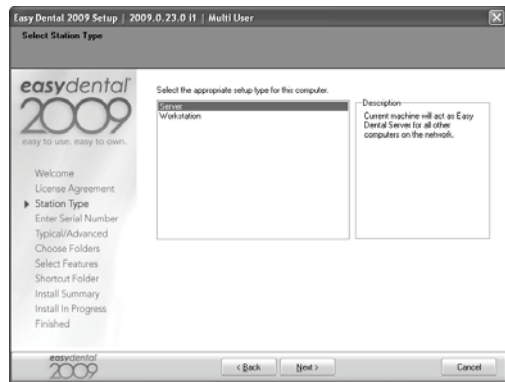
Read the Tips for a Successful Installation and mark the "I have read and followed the 10 steps to a successful installation" radio button. Then, click the Next button. The License Agreement screen appears.



8. Mark "I accept the terms of the license agreement"

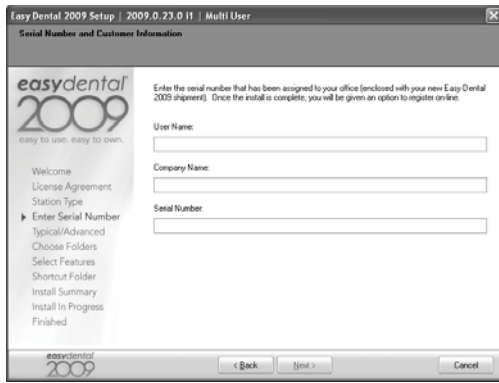
Read the Software License Agreement. Mark "I accept the terms of the license agreement" and click the Next button to continue the installation. The Station Type screen appears.

Note: If you do not agree to the terms of the license agreement, select "I do not agree with the terms of the license agreement" and click Next. The installation will be terminated.



9. Select Setup Type

Highlight the setup type (Server or Workstation). Click Next to continue. The Enter Serial Number screen appears.



10. Enter User Name, Company Name, and Serial Number

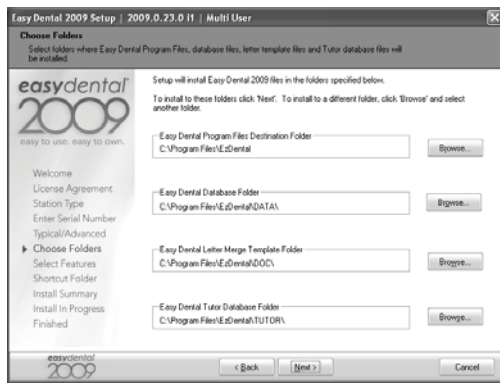
Enter your name, the name of the company, and the serial number that was provided with the software. Click Next to continue. The Typical/Advanced screen appears.



11. Select Installation Type

You can perform one of two installation types: Typical or Advanced. The Typical installation type is recommended for most computers. During the Typical install, the directories will point to the default locations and all of the default features of Easy Dental will be installed. In the Advanced install, you can customize the locations of the directories and select which components of Easy Dental to install.

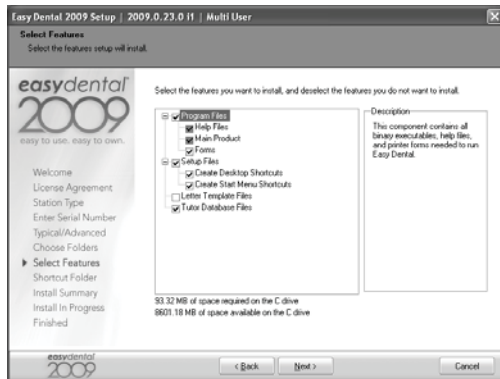
If you select Typical, proceed to Step 12. If you select Advanced, follow the following sub-steps before proceeding to Step 12.



a. Verify Destination Location

The Choose Folders screen lists the destination directories for the Easy Dental 2009 components. By default, the recommended directory is selected for new users. The current location is selected for upgrading users. To change the directory, click the Browse button.

If you want to use the default folder locations, click Next. If you want to change the folder locations, click Browse and browse to the desired location. When each directory is set to the desired destination, click Next to continue. The Select Features screen appears.



b. Select Features to Install

The Select Features screen lists all available features. By default, all features are checked for new users.

Note: The list of features and sub-features changes according to which component is highlighted.

- **Blank Data Files:** Check this option if this is a new installation.

Warning: Do **NOT** check this option if you have previously entered information in Easy Dental. Checking this option when upgrading will cause any existing patient information to be overwritten and lost!

- **Tutor Data Files:** These files are helpful tutorial files used to assist in learning Easy Dental basics. Networked users should install the tutorial files on each workstation. It is recommended that existing users install a new tutorial database to replace the existing Easy Dental 2007 tutorial database.
- **Program Files:** Installs basic program files. This option must be checked in order for Easy Dental to run after the installation.
- **Setup Files:** Installs the setup files necessary to install Easy Dental at a later time if needed. These files should be checked on the server install for both new and upgrading users.
- **Letter Files:** Installs blank letter templates. New users should check this option. Upgrading users should not check this option.

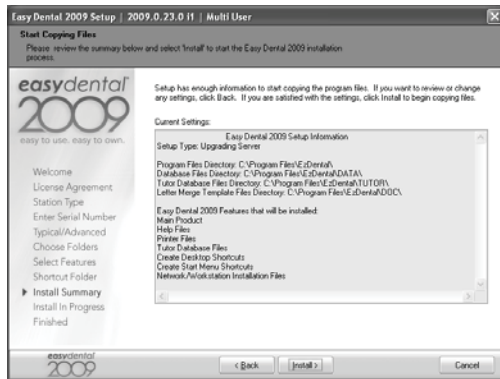
Warning: Checking this option will cause existing Easy Dental letters to be overwritten. Customizations made to letter data will be lost if Letter Files is checked.

Once all of the correct components have been selected, click Next to continue. The Shortcut Folder screen appears.



c. Select Shortcut Folder

The Shortcut Folder is the folder where the Easy Dental start menu shortcuts will be located. By default, the Program Folder is called Easy Dental. The Program Folder name can be customized by entering the desired name or selecting one from the list. Click the Next button to continue. The Install Summary screen appears.



12. Start Installation

When you have selected the features to install (either by using the Typical or Advanced install), review the settings that have been specified for your installation. If you want to make changes to any of the settings, click Back and change the desired settings. When the settings are correct, click Install to begin installing Easy Dental.



When the installation is complete, the Finished screen appears.



13. Click Finish

Check the option to “Register Easy Dental On-Line” and click Finish to complete the setup.

workstation install

1. Connect to the Easy Dental File Server

Map a network drive to the Ezdental directory on the file server. If you do not know how to map a network drive, contact your system administrator or your network software technical support.

2. Double Click the Setup File on the Server

From the workstation, bring up the network drive that was mapped to the server’s Ezdental folder. Within the Data folder, open the Installs folder, then the 2008 subdirectory. Double click the setup.exe file. The Easy Dental install program will start and the Welcome screen appears.

Note: The Easy Dental workstation installation requires a mapped drive. Problems can occur if you run the installation by connecting to the directory via a UNC path instead of mapping a drive.

3. Follow Steps 4 – 13 on pages 13 – 21

Follow the installation steps on pages 13 – 21.

Note: The Data Files and Letter Templates options are not available for a workstation install.

starting easy dental

1. Click Start

Click the Start Button.

2. Select Programs | Easy Dental

From the Start menu, select Programs, then Easy Dental. The Easy Dental Start Up screen appears for several seconds, after which Easy Dental opens.

Note: The install also places a shortcut to the Easy Dental on your Desktop.

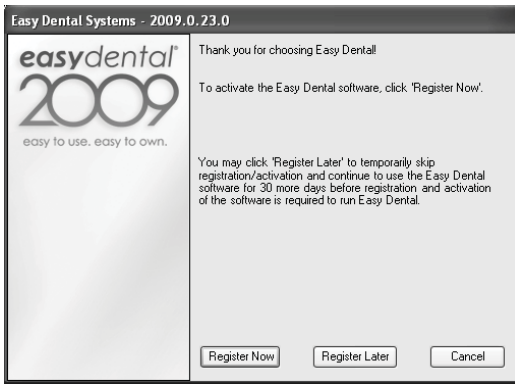
registering/activating easy dental 2009

In order for Henry Schein Practice Solutions to be able to know which version of Easy Dental you are using to provide you with updates, you must register and activate Easy Dental 2009.

Registration was optional in versions of Easy Dental prior to Easy Dental 2009. In Easy Dental 2009, registration and activation is required in order for you to run the software.

It is recommended that you register and activate Easy Dental at the time of installation. If you do not register at the time of installation, you have a grace period of 30 days in which to register before registration/activation is required. After the 30-day grace period, you must register/activate Easy Dental 2009 in order to use your software.

If you do not restart your computer immediately after you complete the installation, the registration/activation dialog appears. If you restart your computer immediately after you complete the installation, the activation dialog appears when you open Easy Dental module.



You can register/activate your software by clicking Register Now. You can temporarily skip the registration/activation process by clicking Register Later.

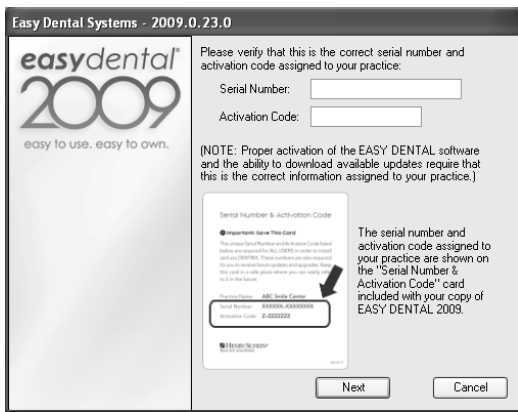
Note: You must complete the registration/activation within 30 days of installation. After 30 days, you will not be able to access your Easy Dental software until you complete the registration/activation.

register now

You only need to register your software once, regardless of how many workstations you have. To register your software:

1. Click Register Now

From any workstation, click Register Now on the registration/activation dialog. The serial number and activation code verification dialog appears.



2. Verify Serial Number

The serial number you entered when you installed Easy Dental 2009 is listed in the Serial Number field. Verify that the serial number listed matches the serial number assigned to your office. You can find your serial number on the card located inside the flap of the outer shipping box in which you received your Easy Dental 2009 software.

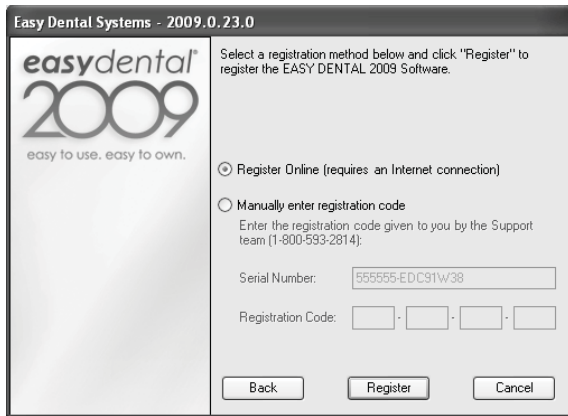
3. Enter Activation Code

In the Activation Code field, enter the activation code assigned to your practice. You can find your serial number and activation code on the card located inside the flap of the outer shipping box in which you received your Easy Dental 2009 software.

Important: You must enter the correct serial number and activation code assigned to your practice. If you do not enter the correct serial number and activation code, you will not be able to activate the software properly or download the correct updates for your software.

4. Click Next

Once you have entered the correct serial number and activation code assigned to your practice, click Next to proceed with the registration process. The select registration method dialog appears.



5. Mark Registration Option

You have two registration options: register online or manually enter a registration code. Mark the desired option. Follow the directions below to register/activate your software.

Note: Registering online requires an Internet connection. If you do not have an Internet connection, you must call the Easy Dental Support department and manually enter the registration code.

registering online

To register/activate your Easy Dental software online:

1. Click Register

Click the Register button. The registration utility will verify your serial number and automatically register/activate your software. A message appears when the activation has been completed successfully.



2. Click OK

Click OK to close the message box and open Easy Dental.

manually entering registration code

To register/activate your Easy Dental software manually:

1. Call Easy Dental Support

You must call Easy Dental Technical Support at 1-800-824-6375 to obtain your complete registration code. When you call Support, you must have your full serial number available, which is located on the Serial Number & Activation Code card inside your Easy Dental 2009 shipping box.

2. Enter Registration Code

Easy Dental Technical Support will provide you with a 16-digit registration code. Enter your registration code (obtained by calling Easy Dental Support) in the fields provided (four digits in each field).

Important: The activation code found on your Serial Number & Activation Code Card is for online registrations only, and is not the registration code you should enter here.

3. Click Register

Click the Register button. A message appears when the activation has been completed successfully.

4. Click OK

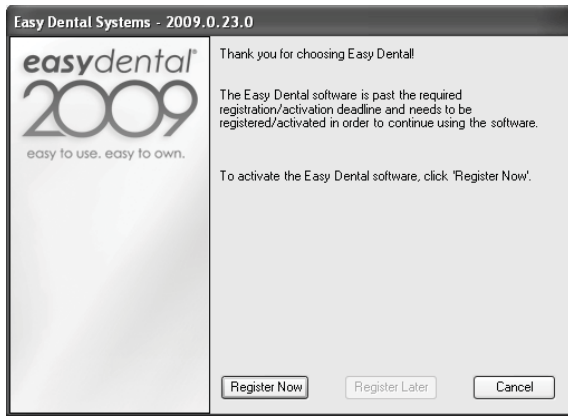
Click OK to close the message box and open the module you were trying to access.

register later

If you click Register Later on the registration/activation dialog, the registration/activation dialog is closed and the module you were trying to access opens.

Until you register Easy Dental 2009, the registration/activation dialog appears once a day and reminds you how many days you have left until you must register/activate Easy Dental 2009.

Since registration/activation is required, you can only click Register Later for 30 days after you install Easy Dental 2009. After 30 days, the Register Later button is disabled on the registration/activation dialog. At that point, you must register Easy Dental 2009 before you can access the program.



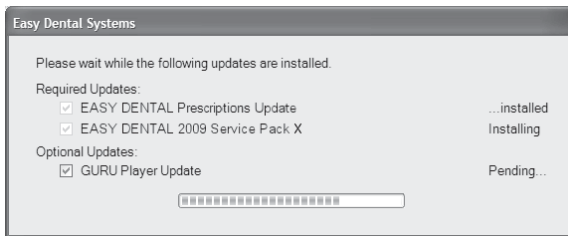
Follow the steps in the Register Now section above to register/activate your software so you can use it.

using smart upgrades

You can use the Smart Upgrades feature to deploy Easy Dental 2009 to the other computers on your network without accessing the setup files on the server or physically taking the DVD to the other computers.

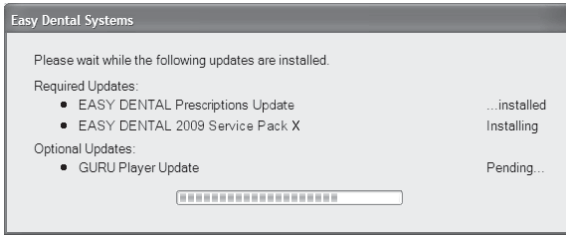
As with all versions of Easy Dental, once you have installed updates on any computer on your network, Easy Dental requires you to install the updates on all other computers on your network. This ensures that your system is synchronized, and up-to-date, which is a requirement.

With Easy Dental 2009 and all future upgrades, this process is automated. When you attempt to open a module on a computer that has not yet installed the required updates, a message box appears, notifying you that the computer needs to install updates.



You must install the required updates to use Easy Dental on that computer. If there are optional updates to install, you can check to install those updates, but it is not required to run Easy Dental.

To install the updates, click Install. All open Easy Dental programs close and an install status message box appears. The updates install and you can then access Easy Dental on that computer.



Note: If you stop the installation before its completion, you will be prompted to install the updates again when you try to access Easy Dental.

